



**NIPPON  
PAINT**

**ATOM ULTRA**  
**2-in-1 PRIMER**  
FOR INTERIOR AND EXTERIOR

## TECHNICAL DATA SHEET

### PRODUCT DESCRIPTION

Nippon Paint Atom Ultra 2 in 1 primer is an acrylic-modified primer. It is suitable for both Interiors as well as exteriors. It provides good adhesion to concrete substrate and is good value for money.



### GREEN ASSURED



### PRODUCT FEATURES & BENEFITS



**Low VOC**  
Environment friendly and Healthy paint



**Good Opacity**  
Better coverage at economic cost



**Good Adhesion**  
This makes the interior cooler, thus helping to save energy used for airconditioning.



**2-in-1 Primer**

**International quality, hi-tech paints**

**1800 425 3636 8939 65 3636**

\*Source: Mordor Intelligence - APAC Top 25 Paints & Coatings Market Analysis (2024)

[www.nipponpaint.co.in](http://www.nipponpaint.co.in)



**NIPPON  
PAINT**

**ATOM ULTRA**  
**2-in-1 PRIMER**  
FOR INTERIOR AND EXTERIOR

## TECHNICAL DETAILS

Colour Range	: White
Finish	: Matt
Dry Time	: To Touch: 30 minutes To Recoat: 4-6 hours
Clean up solvent	: Clean, potable water
Stability of diluted paint	: 24 Hours
Shelf life	: 5 Years from the date of manufacture in original tightly closed containers .Higher temperature during storage may reduce the shelf life and may lead to gelling in the container.
Dilution	: 100% by volume with clean, potable water for exteriors and 50% by volume with clean, potable water for interiors. Stir & strain well before use.

## Coverage

Interior: 16.7 sq.mt. to 18.58 sq.mt.  
Exterior: 9.29 sq.mt. to 10.21 sq.mt.

(Actual coverage is dependant on the substrate condition, surface porosity, method of application).



## HOW TO APPLY

### Surface Preparation



**For Interior:** Clean the surface till it is free from dust, grease and any flaking paint from surface. Apply Nippon Paint Atom Ultra 2-in-1 primer allow to dry for 4-6 hrs. Apply Nippon Acrylic Wall putty for smoothening out dents. Allow to dry putty thoroughly apply one more coat of Nippon Paint Atom Ultra 2-in-1 Primer on puttied surface. Allow painted surface to dry for 4-6hrs. before applying top coat.

**For Exterior for repainting:** Clean the surface till it is free from dust, grease and any flaking paint from surface. Any unstable paint to be removed, using high pressure wash or scraper whichever is appropriate. Algae and Fungus on the wall to be removed, by using high pressure wash or coir brush and shall be treated with Walltron Kleanwall fungicidal solution.

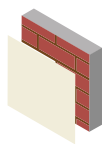
**New Plaster:** Ensure that surface is completely cured and dry. Application of cement paint/white cement/lime as an undercoat is not recommended.

### Application

Brush	: Dilute with water upto 50% for interior use and upto 100% for exterior use
Roller	: Dilute with water upto 50% for interior use and upto 100% for exterior use
Conventional Spray	: Dilute with water upto 50%

### Process

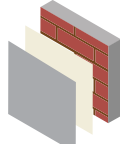
#### Recommended Painting System: Interior



**Primer**  
Nippon Paint  
Atom Ultra  
2-in-1 Primer

Apply 1 coat

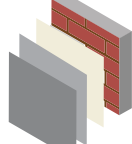
Allow it to dry for 4-5 hours



**Putty**  
Nippon Paint  
Acrylic Wall Putty

Apply 1-2 coats

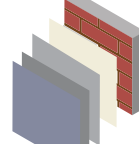
Allow it to dry overnight



**Primer**  
Nippon Paint  
Atom Ultra  
2-in-1 Primer

Apply 1 coat

Allow it to dry for 4-5 hours

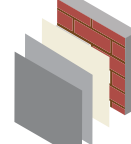


**Top Coat**  
Nippon Paint  
Interior Emulsion Paint

Apply 2-3 coats

Allow it to dry for 4-6 hours

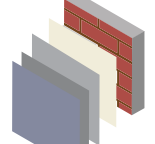
#### Recommended Painting System: Exterior



**Primer**  
Nippon Paint  
Atom Ultra  
2-in-1 Primer

Apply 1 coat

Allow it to dry for 4-5 hours



**Top Coat**  
Nippon Paint  
Exterior Topcoats

Apply 2-3 coats

Allow it to dry for 4-6 hours

**International quality, hi-tech paints**

1800 425 3636 8939 65 3636

\*Source: Mordor Intelligence - APAC Top 25 Paints & Coatings Market Analysis (2024)

[www.nipponpaint.co.in](http://www.nipponpaint.co.in)



**NIPPON  
PAINT**

**ATOM ULTRA**  
**2-in-1 PRIMER**  
FOR INTERIOR AND EXTERIOR

## SAFETY HEALTH & ENVIRONMENTAL INFORMATION

### During Painting:

- Always work in a well ventilated area.
- Wear appropriate attire, especially gloves and eye protection gear.
- Avoid contact with skin as it may cause irritation.

### Cleaning:

Clean all equipments with clean water immediately after use.

### Safety Instructions:

- In the case of eye contact, rinse immediately with water and seek immediate medical treatment.
- To remove paint from skin, use soap and water or appropriate cleanser.
- In the event of spillage, contain and collect spilt paint by using sand or earth.

### Precautions:

- Avoid painting when the temperature is below 10 degrees Celsius.
- Painting is not recommended if the moisture content and alkalinity of the walls is high.
- Moisture content of the walls should be below 16% (measured by Protimeter) and alkalinity of the wall should be below pH-9.
- Relative humidity should be below 85%. Painting on a newly plastered wall is recommended after 12 weeks of curing.

### Storage:

- Store paint in a cool, dry and well ventilated place away from heat sources, flammables or direct sunlight.
- Keep container tightly closed in a secure, upright position.
- Do not store near food, drink or animal feed.
- Keep out of reach of children.
- Do not dispose of unwanted paint into drains, water sources or open sewers.
- To dispose safely, pour unwanted paint onto old newspapers and let dry before placing in a proper waste receptacle.

### Disposal Information:

Disposal of any paint waste and containers in accordance with applicable Environment (Protection) Act 1986 under Hazardous & Other Wastes (Management and Transboundary Movement) Rules, 2016.

### Environment:

- Does not contain any added lead, mercury or chromium compounds.
- Lead content does not exceed 90 parts per million.



### Contact Us

Registered Office : NIPPON PAINT (INDIA) PRIVATE LIMITED

Plot No. K-8(I), Phase-II, SIPCOT Industrial Park, Mambakkam Village, Sriperumbudur, Sunguvarchatiram, Kancheepuram - 602 106, Tamil Nadu, India.