



# NIPPON PAINT

# LATEX INTERIOR PRIMER

Nippon Paint Latex Interior Primer is water based and is formulated to provide good adhesion to interior masonry and cement surfaces. It has good hiding properties and is easy to apply.

## GREEN ASSURED



## PRODUCT FEATURES



**Low VOC**



**Good Adhesion**



**Good Opacity**



**Where To use:** Can be used on interior walls, ceilings and hard & soft boards.



# NIPPON PAINT

# LATEX INTERIOR PRIMER

## TECHNICAL DETAILS

Bases	:	White
Finish	:	Matt
Dry Time	:	To Touch: 30 minutes      To Recoat: 4-6 hours
Clean up solvent	:	Clean, potable water
Stability of diluted paint	:	24 Hours
Shelf life:	:	5 Years from the date of manufacture in original tightly closed containers.
Dilution	:	50% by volume with clean, potable water for exterior.

## Coverage:



### LATEX INTERIOR PRIMER

19.51 - 21.37 sq.mt./litre/1 coat

(Actual coverage is dependant on the substrate condition, surface porosity, method of application.)

## HOW TO APPLY

### Surface Preparation:



Clean the surface till it is free from dust, grease and any flaking paint from surface. Apply Latex Interior primer allow to dry for 4-6 hrs. Apply Nippon Acrylic wall putty for smoothening out dents. Allow to dry putty thoroughly apply one more coat of Latex Interior primer on puttied surface an allow painted surface to dry for 4-6hrs, before applying top coat.

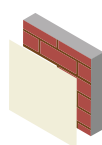
### Application:

Brush: Dilute with 50% water for interior use

Roller: Dilute with 50% water for interior use

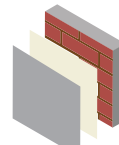
Conventional Spray: Dilute with 50% water for interior use

### Process:



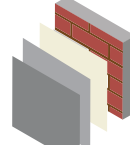
#### Primer

Nippon Paint  
Latex Interior Primer



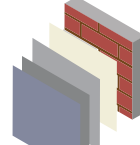
#### Putty

Nippon Paint  
Acrylic Wall Putty



#### Primer

Nippon Paint  
Latex Interior Primer



#### Top Coat

Nippon Paint  
Interior Emulsion



Apply 1 coat



Allow it to dry  
for 4-6 hours

Apply 1-2 coats

Allow it to dry  
overnight

Apply 1 coat

Allow it to dry  
for 4-6 hours

Apply 2-3 coats

Allow it to dry  
for 4-6 hours

## SAFETY AND ENVIRONMENT

### During Painting:

Always work in a well ventilated area. Wear appropriate attire, especially gloves and eye protection gear. Avoid contact with skin as it may cause irritation.

### Cleaning:

Wash all the tools with water immediately after application.

### Safety Instructions:

In the case of eye contact, rinse immediately with water and seek immediate medical treatment. To remove paint from skin, use soap and water or appropriate cleanser. In the event of spillage, contain and collect spilt paint by using sand or earth.

### Precautions:

Avoid painting when the temperature is below 10 degrees Celsius. Painting is not recommended if the moisture content and alkalinity of the walls is high. Moisture content of the walls should be below 16% (measured by Protimeter) and alkalinity of the wall should be below pH-9. Relative humidity should be below 85%. Painting on a newly plastered wall is recommended after 12 weeks of curing.

### Storage:

Store paint in a cool, dry and well ventilated place away from heat sources, flammables or direct sunlight. Keep container tightly closed in a secure, upright position. Do not store near food, drink or animal feed. Keep out of reach of children. Do not dispose of unwanted paint into drains, water sources or open sewers. To dispose safely, pour unwanted paint onto old newspapers and let dry before placing in a proper waste receptacle

### Disposal Information:

Disposal of any paint waste and containers in accordance with applicable Environment (Protection) Act 1986 under Hazardous & Other Wastes (Management and Transboundary Movement) Rules, 2016.

### Environment:

Does not contain any added lead, mercury or chromium compounds.

**Lead content does not exceed 90 parts per million.**

**Note:** Surfaces coated with Latex Interior Primer must be finished with an emulsion topcoat within 15 days of application.

