



NIPPON PAINT

ATOM 2-in-1 PRIMER

FOR INTERIOR AND EXTERIOR

Nippon Paint Atom 2 in 1 primer is an acrylic-modified primer. It is suitable for both Interiors as well as exteriors. It provides good adhesion to concrete substrate and is good value for money.

GREEN ASSURED



PRODUCT FEATURES



Low VOC



Good Adhesion



Good Opacity



2-in-1 Primer

TECHNICAL DETAILS

Colour Range	: White
Finish	: Matt
Dry Time	: To Touch: 30 minutes To Recoat: 4-6 hours
Clean up solvent	: Clean, potable water
Stability of diluted paint	: 24 Hours
Shelf life	: 5 Years from the date of manufacture in original tightly closed containers .Higher temperature during storage may reduce the shelf life and may lead to gelling in the container.
Dilution	: 100% by volume with clean, potable water for exteriors and 50% by volume with clean, potable water for interiors. Stir & strain well before use.

Where To use: Can be used on Interior & Exterior walls, ceilings and hard & soft boards.





NIPPON PAINT

ATOM 2-in-1 PRIMER

FOR INTERIOR AND EXTERIOR

HOW TO APPLY

Surface Preparation:

For Interior: Clean the surface till it is free from dust, grease and any flaking paint from surface. Apply Nippon Paint Atom 2-in-1 primer allow to dry for 4-6 hrs. Apply Nippon Acrylic Wall putty for smoothening out dents. Allow to dry putty thoroughly apply one more coat of Nippon Paint Atom 2-in-1 Primer on puttied surface. Allow painted surface to dry for 4-6hrs. before applying top coat.

For Exterior for repainting: Clean the surface till it is free from dust, grease and any flaking paint from surface. Any unstable paint to be removed, using high pressure wash or scraper whichever is appropriate. Algae and Fungus on the wall to be removed, by using high pressure wash or coir brush and shall be treated with Walltron Kleanwall fungicidal solution.

New Plaster: Ensure that surface is completely cured and dry. Application of cement paint/white cement/lime as an undercoat is not recommended.

Coverage:



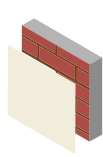
ATOM 2-IN-1 PRIMER

Interior: 16.7 sq.mt. to 18.58 sq.mt.
Exterior: 9.29 sq.mt. to 10.21 sq.mt.

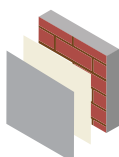
(Actual coverage is dependant on the substrate condition, surface porosity, method of application).

Process:

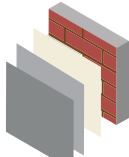
Recommended Painting System: Interior



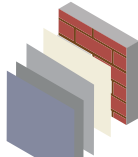
Primer
Nippon Paint
Atom 2-in-1 Primer



Putty
Nippon Paint
Acrylic Wall Putty

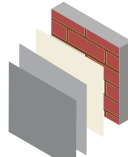


Primer
Nippon Paint
Atom 2-in-1 Primer

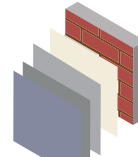


Top Coat
Nippon Paint Economy
range emulsion

Recommended Painting System: Exterior



Primer
Nippon Paint
Atom 2-in-1 Primer



Top Coat
Nippon Paint
Economy range
emulsion

Apply 1 coats

Apply 1-2 coats

Apply 1 coats

Apply 2-3 coats

Apply 1 coats

Apply 2-3 coats

Allow it to dry
for 4-5 hours

Allow it to dry
overnight

Allow it to dry
for 4-5 hours

Allow it to dry
for 4-6 hours

Allow it to dry
for 4-5 hours

Allow it to dry
for 4-6 hours

Application:

Brush : Dilute with 50% water for interior use and 100% for exterior use
Roller : Dilute with 50% water for interior use and 100% for exterior use
Conventional Spray : Dilute with 40 - 50% water

SAFETY AND ENVIRONMENT

During Painting:

Always work in a well ventilated area. Wear appropriate attire, especially gloves and eye protection gear. Avoid contact with skin as it may cause irritation.

Cleaning:

Wash all the tools with water immediately after application.

Safety Instructions:

In the case of eye contact, rinse immediately with water and seek immediate medical treatment. To remove paint for skin, use soap and water or appropriate cleanser. In the event of spillage, contain and collect spilt paint by using sand or earth.

Precautions:

Avoid painting when the temperature is below 10 degrees Celsius. Painting is not recommended if the moisture content and alkalinity of the walls is high. Moisture content of the walls should be below 16% (measured by Protimeter) and alkalinity of the wall should be below pH-9. Relative humidity should be below 85%. Painting on a newly plastered wall is recommended after 12 weeks of curing.

Storage:

Store paint in a cool, dry and well ventilated place away from heat sources, flammables or direct sunlight. Keep container tightly closed in a secure, upright position. Do not store near food, drink or animal feed. Keep out of reach of children. Do not dispose of unwanted paint into drains, water sources or open sewers. To dispose safely, pour unwanted paint onto old newspapers and let dry before placing in a proper waste receptacle.

Disposal Information:

Disposal of any paint waste and containers in accordance with applicable Environment (Protection) Act 1986 under Hazardous & Other Wastes (Management and Transboundary Movement) Rules, 2016

Environment:

Does not contain any added lead, mercury or chromium compounds.
Lead content does not exceed 90 parts per million.

Note: Atom 2-in-1 Primer applied surfaces need to be topcoated with emulsion within 15 days of application

