

TECHNICAL DATA SHEET

sumo eZee

EXTERIOR EMULSION

4

4 Year
Warranty*



Anti-Peel
Formula



Low VOC

NEW



International quality, hi-tech paints

*Source: Top25 2023 Paint Manufacturers in Asia Pacific, Asia Pacific Coatings Journal, pp. 23

☎ 1800 425 3636

☎ 8939 65 3636

www.nipponpaint.co.in



**NO. 1 PAINT IN
ASIA PACIFIC***



**NIPPON
PAINT**

sumo eZee
EXTERIOR EMULSION

PRODUCT DESCRIPTION

Sumo Ezee is a specially formulated, water-based acrylic exterior emulsion paint ideally suited for dry or moderately humid climate conditions. It is anti-peel, anti-fungal and resists fading. It is durable and offers good hiding and spreading.

GREEN ASSURED



PRODUCT FEATURES



LOW VOC

Environment-friendly and healthy paint.



ANTI-PEEL FORMULA

The paint doesn't peel off from the wall or flakes, hence walls look beautiful for longer periods.



VERY GOOD COVERAGE & HIDING

Gives rich finish to the wall and needs less paint to paint same area.

Where to use:

Can be used on Exterior Masonry Surfaces.

*4 years Performance Warranty for Film Integrity, Flaking, Peeling & Colour Retention. Please refer Warranty Card for further details.

International quality, hi-tech paints

1800 425 3636 8939 65 3636

www.nipponpaint.co.in



**NIPPON
PAINT**

sumo eZee
EXTERIOR EMULSION

TECHNICAL DETAILS

Bases	: White and Bases
Colour Range	: Please refer to Nippon Paint shade card and fandeck.
Finish	: Smooth Matt finish
Coverage	: 50 - 60 sq. ft./L for 2 coats (Actual coverage is dependant on the substrate condition, surface porosity, method of application).
Dry Time	: To Touch: 30 mins, To Recoat: 4-6 hours
Gloss Level	: Matt finish
Clean Up Solvent	: Clean, potable water.
Stability of Diluted Paint	: 24 hours
Shelf Life	: 3 Years from the date of manufacture in original tightly closed containers.
Dilution of Base Coat	: upto 50 - 60% by volume with clean, potable water.

STANDARD APPLICATION SYSTEM

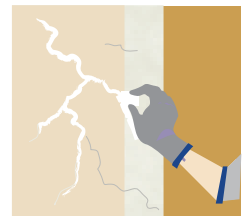
Surface Preparation

For Repainting:

- Clean the surface till it is free from dust, grease and flaking paint.
- Any unstable paint is to be removed, using high pressure wash or scraper, whichever is appropriate.
- Algae and fungus on the wall is to be removed by using high pressure wash or coir brush and shall be treated with Walltron Kleanwall fungicidal solution.

New Plaster:

- Ensure surface is completely cured and dry.
- Application of cement paint / lime / white cement as an undercoat is not recommended.



International quality, hi-tech paints

1800 425 3636 8939 65 3636

www.nipponpaint.co.in



**NIPPON
PAINT**

sumo eZee
EXTERIOR EMULSION

RECOMMENDED PAINTING SYSTEM

SEQUENCE	PRODUCT	NO. OF COATS
Primer Coat	Nippon Multi purpose wall Sealer/ Latex Exterior Primer	Apply 1 coat and allow to dry for 4-6 hours
Top Coat	Sumo Ezee	Apply 2-3 coats in an interval of 4-6 hours

Post Application Instruction: To enhance the performance of the paint film, clean the exterior surface, algae & fungus if any with clean water in an interval of 6 month.

Note: For Chalky surface apply Maxx Clear Sealer for better adhesion before applying topcoat.

Application:

Brush:	Dilute both 1 st and 2 nd coats with 50-60% water.
Roller:	Dilute both 1 st and 2 nd coats with 50-60% water.
Spray:	Dilute both 1 st and 2 nd coats with 50-60% water.



International quality, hi-tech paints

1800 425 3636 8939 65 3636

www.nipponpaint.co.in



**NIPPON
PAINT**

sumo eZee
EXTERIOR EMULSION

SAFETY HEALTH & ENVIRONMENTAL INFORMATION

During Painting:

- Always work in a well ventilated area.
- Wear appropriate attire, especially gloves and eye protection gear.
- Avoid contact with skin as it may cause irritation.

Cleaning:

- Clean all equipments with clean water immediately after use.

Safety Instructions:

- In the case of eye contact, rinse immediately with water and seek immediate medical treatment.
- To remove paint from skin, use soap and water or appropriate cleanser.
- In the event of spillage, contain and collect spilt paint by using sand or earth.

Precautions:

- Avoid painting when the temperature is below 10 degrees Celsius.
- Painting is not recommended if the moisture content and alkalinity of the walls is high.
- Moisture content of the walls should be below 16% (measured by Protimeter) and alkalinity of the wall should be below pH-9.
- Relative humidity should be below 85%.
- Painting on a newly plastered wall is recommended after 12 weeks of curing.

Storage:

- Store paint in a cool, dry and well ventilated place away from heat sources, flammables or direct sunlight.
- Keep container tightly closed in a secure, upright position.
- Do not store near food, drink or animal feed.
- Keep out of reach of children.
- Do not dispose of unwanted paint into drains, water sources or open sewers.
- To dispose safely, pour unwanted paint onto old newspapers and let dry before placing in a proper waste receptacle.

Disposal Information:

Disposal of any paint waste & containers in accordance with applicable Environment (Protection) Act 1986 under the Hazardous Wastes (Management & Handling) rules 1989.

Environment:

- Does not contain any added lead, mercury or chromium compounds.
- Lead content does not exceed 90 parts per million.

Contact Us

Registered Office : NIPPON PAINT (INDIA) PRIVATE LIMITED

Plot No. K-8(I), Phase-II, SIPCOT Industrial Park, Mambakkam Village, Sriperumbudur, Sunguvarchatiram, Kancheepuram - 602 106, Tamil Nadu, India.