



TECHNICAL DATA SHEET

MATEX eZee

INTERIOR EMULSION



4

4 Year
Warranty*



Good Washability



Low VOC

NEW



International quality, hi-tech paints

*Source: Top25 2023 Paint Manufacturers in Asia Pacific, Asia Pacific Coatings Journal, pp. 23

1800 425 3636

8939 65 3636

www.nipponpaint.co.in





**NIPPON
PAINT**

MATEX eZee
INTERIOR EMULSION

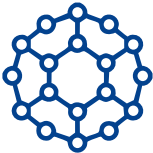
PRODUCT DESCRIPTION

Matex Ezee is a specially formulated water based modified acrylic emulsion paint for interior walls. It is durable, washable and provides a superior, smooth finish. It offers good hiding and spreading.

GREEN ASSURED



PRODUCT FEATURES



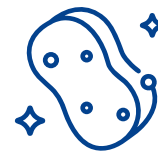
MICRONIZED PARTICLES

Helps to keep the paint film blister-free, smooth and washable.



LOW VOC

Environment-friendly and healthy paint.



GOOD WASHABILITY

Trouble free cleaning of the walls.

Gives best performance when Nippon paint Multipurpose wall sealer/Interior primer is used as undercoat.

Where to use:

Can be used on interior walls, ceilings and hard & soft boards.

International quality, hi-tech paints

1800 425 3636 8939 65 3636

www.nipponpaint.co.in



**NIPPON
PAINT**

MATEX eZee
INTERIOR EMULSION

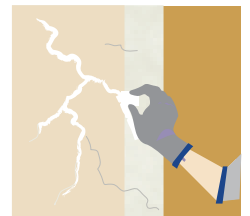
TECHNICAL DETAILS

Bases	: White and Bases
Colour Range	: Please refer to Nippon Paint shade card and fandeck.
Finish	: Smooth Matt finish
Coverage	: 110 - 130 sq. ft./L for 2 coats (Actual coverage is dependant on the substrate condition, surface porosity, method of application).
Dry Time	: To Touch: 30 mins, To Recoat: 4-6 hours
Gloss Level	: Smooth Matt finish
Clean Up Solvent	: Clean, potable water.
Stability of Diluted Paint	: 24 hours
Shelf Life	: 3 Years from the date of manufacture in original tightly closed containers.
Dilution of Base Coat	: upto 60% by volume with clean, potable water.

STANDARD APPLICATION SYSTEM

Surface Preparation

- Keep surface clean & dry.
- Remove dust, dirt, grease and any flaking paint from the surface and sand to smooth.
- Ensure there is no fungus or moisture on the wall.
- Repair surface defects with suitable filler.



International quality, hi-tech paints

1800 425 3636 8939 65 3636

www.nipponpaint.co.in



**NIPPON
PAINT**

MATEX eZee
INTERIOR EMULSION

RECOMMENDED PAINTING SYSTEM

SEQUENCE	PRODUCT	NO. OF COATS
Primer Coat	Nippon Multi purpose wall Sealer/ Latex Exterior Primer	Apply 1 coat and allow to dry for 6-8 hours
Putty	Nippon Acrylic Wall Putty	Apply Nippon Acrylic Putty 1-2 coats for smoothing of surface. Allow to dry overnight.
Primer Coat	Nippon Multi purpose wall Sealer/ Latex Exterior Primer	Apply 1 coat and allow to dry for 6-8 hours
Top Coat	Matex Ezee	Apply 2-3 coats in an interval of 4-6 hours

Note: For dark shades apply additional coat for complete hiding. For dark shade dilution upto 30% is recommended.

Application:

Brush:	Dilute both 1 st and 2 nd coats with 50-60% water.
Roller:	Dilute both 1 st and 2 nd coats with 50-60% water.
Spray:	Dilute both 1 st and 2 nd coats with 50-60% water.



International quality, hi-tech paints

1800 425 3636 8939 65 3636

www.nipponpaint.co.in



**NIPPON
PAINT**

MATEX eZee
INTERIOR EMULSION

SAFETY HEALTH & ENVIRONMENTAL INFORMATION

During Painting:

- Always work in a well ventilated area.
- Wear appropriate attire, especially gloves and eye protection gear.
- Avoid contact with skin as it may cause irritation.

Cleaning:

- Clean all equipments with clean water immediately after use.

Safety Instructions:

- In the case of eye contact, rinse immediately with water and seek immediate medical treatment.
- To remove paint from skin, use soap and water or appropriate cleanser.
- In the event of spillage, contain and collect spilt paint by using sand or earth.

Precautions:

- Avoid painting when the temperature is below 10 degrees Celsius.
- Painting is not recommended if the moisture content and alkalinity of the walls is high.
- Moisture content of the walls should be below 16% (measured by Protimeter) and alkalinity of the wall should be below pH-9.
- Relative humidity should be below 85%.
- Painting on a newly plastered wall is recommended after 12 weeks of curing.

Storage:

- Store paint in a cool, dry and well ventilated place away from heat sources, flammables or direct sunlight.
- Keep container tightly closed in a secure, upright position.
- Do not store near food, drink or animal feed.
- Keep out of reach of children.
- Do not dispose of unwanted paint into drains, water sources or open sewers.
- To dispose safely, pour unwanted paint onto old newspapers and let dry before placing in a proper waste receptacle.

Disposal Information:

Disposal of any paint waste & containers in accordance with applicable Environment (Protection) Act 1986 under the Hazardous Wastes (Management & Handling) rules 1989.

Environment:

- Does not contain any added lead, mercury or chromium compounds.
- Lead content does not exceed 90 parts per million.

Contact Us

Registered Office : NIPPON PAINT (INDIA) PRIVATE LIMITED

Plot No. K-8(I), Phase-II, SIPCOT Industrial Park, Mambakkam Village, Sriperumbudur, Sunguvarchatiram, Kancheepuram - 602 106, Tamil Nadu, India.