



**NIPPON
PAINT**

**SPOTLESS
NXT**

STAIN REPELLENT EMULSION

TECHNICAL DATA SHEET

NEW AND IMPROVED **SPOTLESS NXT** STAIN REPELLENT EMULSION



**PROTECTS FROM
SCUFF MARKS**

*Regular Paint

*Spotless Nxt Paint



**NO. 1 PAINT IN
ASIA PACIFIC***

International quality, hi-tech paints

1800 425 3636 8939 65 3636

*Source: Top25 2023 Paint Manufacturers in Asia Pacific. Asia Pacific Coatings Journal, pp. 23

www.nipponpaint.co.in



**NIPPON
PAINT**

NEW AND IMPROVED
SPOTLESS NXT
STAIN REPELLENT EMULSION

PRODUCT DESCRIPTION

A premium interior emulsion that is a specially-formulated acrylic emulsion paint and repels household stains such as tea, coffee, juices, ink, hand-prints, etc.

It's latest Anti Scuff property protects walls against scuff marks being left behind from items such as shoes and bags, making it perfect for use in high traffic environments.

Our unique 'Swan-back' technology makes it highly resistant to the penetration of water-borne stains, and causes them to form beads. This 'beading effect' ensures stains don't stick and can be removed easily without damaging the paint.

Nippon Paint Spotless NXT is a high-quality paint that is suitable for bedrooms, hallways, living and dining rooms.



GREEN ASSURED



PRODUCT FEATURES & BENEFITS



ANTI-SCUFF

NEW

Protects walls from scuff marks.



GOOD WASHABILITY

Trouble free cleaning of the walls.



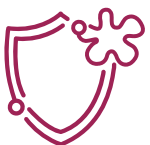
SWAN-BACK TECHNOLOGY

Stain free clean walls resulting in a healthy environment.



ULTRA LOW VOC

Healthy interiors – ensures that home owners can occupy the house immediately after painting.



STAIN-REPELLENT

Stain free clean walls resulting in a healthy environment.



SOFT SHEEN

Gives a soft sheen finish.

International quality, hi-tech paints

1800 425 3636 8939 65 3636



**NIPPON
PAINT**

NEW AND IMPROVED
SPOTLESS NXT
STAIN REPELLENT EMULSION

TECHNICAL DETAILS

Bases	:	White, Base 4, Base 3, Base 2, Base 1 and Yellow Base
Colour Range	:	Please refer to Nippon Paint shade card and fan decks
Finish	:	Soft Sheen
Dry Time	:	To Touch: 30 minutes To Recoat: 4-6 Hours
Gloss Level	:	60° head: 5 - 18 units
Clean Up Solvent	:	Clean, potable water
Stability of Diluted Paint	:	24 Hours
Shelf Life	:	3 Years from the date of manufacture in original tightly closed containers.
Dilution	:	30 - 40% by volume with clean, potable water, 20% dilution for dark shades.

Coverage

18.58 - 23.22
sq.mt./litre/coat &

9.29 - 11.15
sq.mt./litre/2 coats

(Actual coverage is dependant on the substrate condition, Film Thickness, surface porosity, method of application)



HOW TO APPLY

Surface Preparation

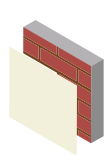


- Keep surface clean and dry for a period of at least 3 weeks.
- Remove dust, dirt, grease and any flaking paint from the surface and sand to smooth.
- Ensure there is no fungus or moisture on the walls.
- Repair surface defects with suitable filler.

Application

Brush: Dilute both 1st and 2nd coats with 30-40% water
 Roller: Dilute both 1st and 2nd coats with 30-40% water
 Conventional Spray: Dilute both 1st and 2nd coats with 30-40% water

Process



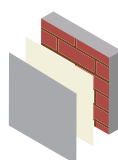
Primer
Nippon Paint
Multi-Purpose
Wall Sealer/
Interior Primer



Apply 1 coat



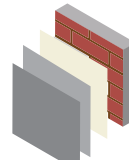
Allow it to dry
for 6-8 hours



Putty
Nippon Paint
Acrylic Wall Putty

Apply 1-2 coats

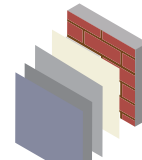
Allow it to dry
for 12-18 hours



Primer
Nippon Paint
Multi-Purpose
Wall Sealer/
Interior Primer

Apply 1 coat

Allow it to dry
for 6-8 hours



Top Coat
Nippon Paint
Spotless NXT

Apply 2-3 coats

Allow it to dry
for 4-6 hours

International quality, hi-tech paints

1800 425 3636 8939 65 3636



**NIPPON
PAINT**

NEW AND IMPROVED
SPOTLESS NXT
STAIN REPELLENT EMULSION

SAFETY HEALTH & ENVIRONMENTAL INFORMATION

During Painting:

- Always work in a well ventilated area.
- Wear appropriate attire, especially gloves and eye protection gear.
- Avoid contact with skin as it may cause irritation.

Cleaning:

Clean all equipments with clean water immediately after use.

Safety Instructions:

- In the case of eye contact, rinse immediately with water and seek immediate medical treatment.
- To remove paint from skin, use soap and water or appropriate cleanser.
- In the event of spillage, contain and collect spilt paint by using sand or earth.

Precautions:

- Avoid painting when the temperature is below 10 degrees Celsius.
- Painting is not recommended if the moisture content and alkalinity of the walls is high.
- Moisture content of the walls should be below 16% (measured by Protimeter) and alkalinity of the wall should be below pH-9.
- Relative humidity should be below 85%. Painting on a newly plastered wall is recommended after 12 weeks of curing.

Storage:

- Store paint in a cool, dry and well ventilated place away from heat sources, flammables or direct sunlight.
- Keep container tightly closed in a secure, upright position.
- Do not store near food, drink or animal feed.
- Keep out of reach of children.
- Do not dispose of unwanted paint into drains, water sources or open sewers.
- To dispose safely, pour unwanted paint onto old newspapers and let dry before placing in a proper waste receptacle.

Disposal Information:

Disposal of any paint waste & containers in accordance with applicable Environment (Protection) Act 1986 under the Hazardous Wastes (Management & Handling) rules 1989.

Environment:

- Does not contain any added lead, mercury or chromium compounds.
- Lead content does not exceed 90 parts per million.

Note: For dark shades and horizontal surfaces 1 or 2 additional coats may be required for better performance of paint film.



Contact Us

Registered Office : NIPPON PAINT (INDIA) PRIVATE LIMITED

Plot No. K-8(I), Phase-II, SIPCOT Industrial Park, Mambakkam Village, Sriperumbudur, Singuvarchatiram, Kancheepuram - 602 106, Tamil Nadu, India.