



WEATHERBOND PRO

HIGHLY DURABLE EXTERIOR EMULSION



16
YEARS
WARRANTY



International quality, hi-tech paints

1800 425 3636

8939 65 3636

www.nipponpaint.co.in



NO. 1 PAINT IN
ASIA PACIFIC*

*Source: Top25 2023 Paint Manufacturers in Asia Pacific, Asia Pacific Coatings Journal, pp. 23



**NIPPON
PAINT**

**WEATHERBOND
PRO**

HIGHLY DURABLE EXTERIOR EMULSION




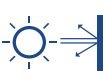




PRODUCT DESCRIPTION

Nippon Paint's **WEATHERBOND PRO** is high performance, pure acrylic exterior painting system which offers outstanding protection for exterior surfaces. The product also offers unique protection against water, algal attack, dust pick up, hairline crack, efflorescence and extreme Weathering. Weatherbond PRO system provides effective waterproofing & anti carbonation properties.

GREEN ASSURED



PRODUCT FEATURES & BENEFITS

	ACTION	BENEFIT
 DIRT PICK UP RESISTANT	It doesn't allow dirt/dust to settle on vertical walls.	The exteriors look new and beautiful for years.
 QUARTZ TECHNOLOGY	Hard and tough paint film.	Provides excellent water resistance, UV radiation and dirt penetration.
 COLOUR-LOCK TECHNOLOGY**	Prevents colour fading.**	Colour protection from extreme weathering.
 SUN BLOCK TECHNOLOGY*	The innovative sun block technology reflects back 90% of the sunrays which reduces surface temperature by up to 10°C.*	This makes the interior cooler, thus saving energy used for Air conditioning.
 HIGH SHEEN FINISH	Rich sheen, ascent shades.	Rich appearance.
 EXTREME DURABILITY	Best bio-pack system - resistance to water and fade resistance formula.	Surface and Colours look uniform giving a beautiful look to the walls for years to come.
 ALGAL & FUNGAL RESISTANCE	It is specially formulated to be resistant to the elements such as fungus, algae, chalking and flaking.	Gives a polished look to your home.
 ULTRA LOW VOC	It does not emit air polluting harmful vapours and paint odour that pollutes environment.	Environment friendly paint.

Note: *Surface temperature reduction: Up to 10°C in white and select pastel shades only. Temperature recorded from 1 pm to 3 pm with the aid of laser guided infrared no contact thermometer, degree of surface temperature reduction will vary depending upon the surface & weather conditions.

**Colour fading applicable on select shades.

International quality, hi-tech paints

1800 425 3636 8939 65 3636

www.nipponpaint.co.in



NIPPON PAINT

WEATHERBOND PRO

HIGHLY DURABLE EXTERIOR EMULSION

Post Application Instruction:

Check for surface seepages or rising dampness. Moisture levels should not exceed 16%, as it may affect the performance of the painted surface before or after painting. To enhance performance of the paint film, clean the exterior surfaces of algae or fungus if any, with clean water in an interval of 6 months.

Where to use:

Can be used on Exterior Masonry Surfaces.



TECHNICAL DETAILS

Bases	: White and Bases
Colour Range	: Please refer to Nippon Paint shade card and fandeck.
Finish	: High Sheen Finish.
Coverage	: Weatherbond PRO Emulsion: (50 - 60 sq. ft.) 4.65 - 5.58 sq. m/litre for 2 coats (Actual coverage is dependant on the substrate condition, surface porosity, method of application). Weatherbond PRO Base Coat: Maximum Coverage of (30 - 35 sq. ft.) 2.79 - 3.25 sq. m/litre for 2 coats for both repainting as well as on fresh concrete.
Dry Time	: To Touch: 30 mins, To Recoat: 4-6 hours
Gloss Level	: 60° head: 30 - 40 units.
Clean Up Solvent	: Clean, potable water.
Stability of Diluted Paint	: 24 hours
Shelf Life	: 3 Years from the date of manufacture in original tightly closed containers.
Dilution of Base Coat	: For 1st coat 30% dilution, for 2nd coat no dilution.
Dilution of Top Coat	: For 1st and 2nd coat upto 20% dilution by volume. Stir & strain well before use.

STANDARD APPLICATION SYSTEM

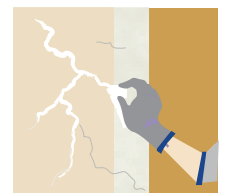
Surface Preparation

For Repainting:

- Clean the surface till it is free from dust, grease and flaking paint.
- Any unstable paint is to be removed, using high pressure wash or scraper, whichever is appropriate.
- Algae and fungus on the wall is to be removed, using high pressure wash or coir brush and shall be treated with Walltron Kleanwall fungicidal solution.

New Plaster/Fresh Concrete:

- Ensure surface is completely cured and dry. pH of the surface should be between 7-9 in litmus paper.
- Application of cement paint / lime / cement putty as undercoat is not recommended.
- Fill the cracks upto 3mm if any, with Walltron N-seal crack fill powder.



**NIPPON
PAINT****WEATHERBOND
PRO**
HIGHLY DURABLE EXTERIOR EMULSION

RECOMMENDED PAINTING SYSTEM

For Fresh Concrete & Repainting (for 16* Years Warranty)

SEQUENCE	PRODUCT	NO. OF COATS
Base Coat	Weatherbond PRO Base Coat	Apply a coat with 30% dilution using potable water by volume.
Base Coat	Weatherbond PRO Base Coat	Apply a coat without dilution.
Top Coat	Weatherbond PRO Emulsion	Apply 2-3 coats with upto 20% dilution with potable water by volume at an interval of 4-6 hours.

Performance warranty upto *16 years for (Colour Retention & Film Integrity) for vertical surfaces. 12* years Waterproofing warranty & 10* years Anti Algal Warranty for vertical surfaces. Above system is applicable for anticarbonation properties.

*Terms and condition apply. Please refer to the warranty terms and for further details please visit our website www.nipponpaint.co.in

For Fresh Concrete & Repainting (for 13* Years Warranty)

SEQUENCE	PRODUCT	NO. OF COATS
Primer Coat	Dr. Bond Efflorescence Resistant Sealer	Apply a coat with 100% dilution using potable water by volume.
Top Coat	Weatherbond PRO Emulsion	2-3 coats with upto 20% dilution with potable water by volume at an interval of 4-6 hours.

Note: Weatherbond PRO should not be applied on surfaces / substrates that are subjected to continuous seepage or dampness.

Note: 1 coat of Weatherbond PRO Base Coat or 1 coat of Weatherbond PRO Top Coat should not be kept exposed beyond 15 days or during any rain. Complete the full system application before rain to be insured of warranty.

Application

Brush:	Dilute both 1 st and 2 nd coats upto 20% by potable water by volume.
Roller:	Dilute both 1 st and 2 nd coats upto 20% by potable water by volume.
Spray:	Dilute both 1 st and 2 nd coats upto 20% by potable water by volume.



International quality, hi-tech paints

1800 425 3636 8939 65 3636

www.nipponpaint.co.in



**NIPPON
PAINT**

**WEATHERBOND
PRO**
HIGHLY DURABLE EXTERIOR EMULSION

SAFETY HEALTH & ENVIRONMENTAL INFORMATION

During Painting:

- Always work in a well ventilated area.
- Wear appropriate attire, especially gloves and eye protection gear.
- Avoid contact with skin as it may cause irritation.

Cleaning:

- Clean all equipments with clean water immediately after use.
- It is advised to have regular pest control and cleanliness maintained which is key to preserving the desired result and durability of the paint.

Safety Instructions:

- In the case of eye contact, rinse immediately with water and seek immediate medical treatment.
- To remove paint from skin, use soap and water or appropriate cleanser.
- In the event of spillage, contain and collect spilt paint by using sand or earth.

Precautions:

- Avoid painting when the temperature is below 10 degrees Celsius.
- Painting is not recommended if the moisture content and alkalinity of the walls is high.
- Moisture content of the walls should be below 16% (measured by Protimeter) and alkalinity of the wall should be below pH-9.
- Relative humidity should be below 85%.
- Painting on a newly plastered wall is recommended after 12 weeks of curing.

Storage:

- Store paint in a cool, dry and well ventilated place away from heat sources, flammables or direct sunlight.
- Keep container tightly closed in a secure, upright position.
- Do not store near food, drink or animal feed.
- Keep out of reach of children.
- Do not dispose of unwanted paint into drains, water sources or open sewers.
- To dispose safely, pour unwanted paint onto old newspapers and let dry before placing in a proper waste receptacle.

Disposal Information:

Disposal of any paint waste & containers in accordance with applicable Environment (Protection) Act 1986 under the Hazardous Wastes (Management & Handling) rules 1989.

Environment:

- Does not contain any added lead, mercury or chromium compounds.
- Lead content does not exceed 90 parts per million.

Contact Us

Registered Office : NIPPON PAINT (INDIA) PRIVATE LIMITED

Plot No. K-8(I), Phase-II, SIPCOT Industrial Park, Mambakkam Village, Sriperumbudur, Senguvarchatiram, Kancheepuram - 602 106, Tamil Nadu, India.