



**NIPPON
PAINT**

**WEATHERBOND
ADVANCE**



LAMINATION TECHNOLOGY

12
YEARS
WARRANTY*



**NO. 1 PAINT IN
ASIA PACIFIC***

International quality, hi-tech paints

1800 425 3636 8939 65 3636

*Source: Top25 2023 Paint Manufacturers in Asia Pacific, Asia Pacific Coatings Journal, pp. 23

www.nipponpaint.co.in



**NIPPON
PAINT**

NEW

**WEATHERBOND
ADVANCE**

PRODUCT DESCRIPTION

NIPPON PAINT'S **NEW WEATHERBOND ADVANCE** is a pure acrylic based exterior paint that comes equipped with **QUARTZ TECHNOLOGY** and possesses a unique lamination technology with silicone. As India's first, the Quartz Technology provides 2X toughness and durability resulting in supreme protection against harsh weather. It has innovative "Sun Block Technology" that reflects 90% of the solar light on exterior walls and reduces surface temperature upto 7 degrees Celsius, making the interiors of the house cooler, thus saving energy. It has ultra low VOC ensuring a safe environment.



GREEN ASSURED



PRODUCT FEATURES & BENEFITS

		ACTION	BENEFIT
	DIRT PICK UP RESISTANT	It doesn't allow dirt/dust to settle on walls.	The exteriors look new and beautiful for years.
	QUARTZ TECHNOLOGY	Hard and tough paint film.	Provides excellent water resistance, UV radiation and dirt penetration.
	SUN BLOCK TECHNOLOGY	The innovative sun block technology reflects back 90% of the sunrays which reduces surface temperature by up to 7°C.**	This makes the interior cooler, thus saving energy used for Air conditioning.
	ALGAL & FUNGAL RESISTANCE	It is specially formulated to be resistant to the elements such as fungus, algae, chalking and flaking.	Gives a polished look to your home for years to come.
	ULTRA LOW VOC	It does not emit air polluting harmful vapours and paint odour that pollutes our environment.	Environment friendly and healthy paint.

*12 years Performance Warranty for Film Integrity, Flaking, Peeling & Colour Retention. *5 years Anti Algal warranty. Please refer Warranty Card for further details.

**Surface temperature reduction: Temperature to be recorded between 1 pm to 3 pm with the aid of laser guided infrared no contact thermometer. Degree of surface temperature reduction will vary depending upon the surface and weather conditions.

International quality, hi-tech paints

1800 425 3636 8939 65 3636



**NIPPON
PAINT**

NEW

**WEATHERBOND
ADVANCE**

TECHNICAL DETAILS

Bases	: White and Bases
Colour Range	: Please refer to Nippon Paint shade card and fan decks.
Finish	: Good Sheen Finish.
Coverage	: 10.2 - 12.1 m ² / L / coat & 5.1 - 6 m ² / L / 2 coats (Actual coverage is dependant on the substrate condition, surface porosity, method of application).
Dry Time	: To Touch: 30 mins, To Recoat: 4-6 hours
Gloss Level	: 60° head: 10 - 20 units
Clean Up Solvent	: Clean, potable water
Stability of Diluted Paint	: 24 hours
Shelf Life	: 3 Years from the date of manufacture in original tightly closed containers.
Dilution	: 40 - 50% by volume with clean, potable water.



STANDARD APPLICATION SYSTEM

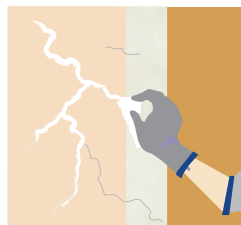
Surface Preparation

For Repainting:

- Clean the surface till it is free from dust, grease and flaking paint from surface.
- Any unstable paint to be removed, using high pressure wash or scraper whichever is appropriate.
- Algae and fungus on the wall to be removed, by using high pressure wash or coir brush and shall be treated with Walltron Kleanwall fungicidal solution.

New Plaster/Fresh Concrete:

- Ensure surface is completely cured and dry.
- Application of cement paint / lime / cement putty as undercoat is not recommended.
- Fill the cracks upto 3mm if any with Walltron N-seal crack fill powder.



International quality, hi-tech paints

1800 425 3636 8939 65 3636

**NIPPON
PAINT****NEW****WEATHERBOND
ADVANCE**

RECOMMENDED PAINTING SYSTEM

SEQUENCE	PRODUCT	NO. OF COATS
Primer	Nippon Dr. Bond Efflorescence Resistance Sealer / Nippon Paint Multi-Purpose Wall Sealer / Latex Exterior Primer.	Apply 1 coat and allow to dry for 4-6 hours.
Top Coat	Nippon Weatherbond Advance	Apply 2-3 coats with 40 - 50 % dilution in an interval of 4-6 hours.

For Waterproofing & Anticarbonation System

SEQUENCE	PRODUCT	NO. OF COATS
Base Coat	Walltron Hydroshield Dampproof	Apply a coat with 30% dilution using potable water by volume.
Base Coat	Walltron Hydroshield Dampproof	Apply a coat without dilution.
Top Coat	Nippon Weatherbond Advance	2-3 coats with upto 40 - 50 % dilution with potable water by volume at an interval of 4-6 hours.

Note: For dark shades and Horizontal surface, one or two additional coats are recommended for better performance of paint film. Primed surface should be immediately painted with top coats. For best Performance use Nippon Dr. Bond Efflorescence Resistance Sealer as primer. If surface is applied with cement based putty apply Maxx clear Sealer as primer for superior adhesion.

Post Application Instruction

To enhance performance of the paint film , clean the exterior surfaces, algae or fungus (if any) with clean water in an interval of 6 months.

Application

Brush:	Dilute both 1 st and 2 nd top coats with 40 - 50% water.
Roller:	Dilute both 1 st and 2 nd top coats with 40 - 50% water.
Conventional Spray:	Dilute both 1 st and 2 nd top coats with 40 - 50% water.

**International quality, hi-tech paints****1800 425 3636 8939 65 3636**



**NIPPON
PAINT**

NEW

**WEATHERBOND
ADVANCE**

SAFETY HEALTH & ENVIRONMENTAL INFORMATION

During Painting:

- Always work in a well ventilated area.
- Wear appropriate attire, especially gloves and eye protection gear.
- Avoid contact with skin as it may cause irritation.

Cleaning:

Clean all equipments with clean water immediately after use.

Safety Instructions:

- In the case of eye contact, rinse immediately with water and seek immediate medical treatment.
- To remove paint from skin, use soap and water or appropriate cleanser.
- In the event of spillage, contain and collect spilt paint by using sand or earth.

Precautions:

- Avoid painting when the temperature is below 10 degrees Celsius.
- Painting is not recommended if the moisture content and alkalinity of the walls is high.
- Moisture content of the walls should be below 16% (measured by Protimeter) and alkalinity of the wall should be below pH-9.
- Relative humidity should be below 85%.
- Painting on a newly plastered wall is recommended after 12 weeks of curing.

Storage:

- Store paint in a cool, dry and well ventilated place away from heat sources, flammables or direct sunlight.
- Keep container tightly closed in a secure, upright position.
- Do not store near food, drink or animal feed.
- Keep out of reach of children.
- Do not dispose of unwanted paint into drains, water sources or open sewers.
- To dispose safely, pour unwanted paint onto old newspapers and let dry before placing in a proper waste receptacle.

Disposal Information:

Disposal of any paint waste & containers in accordance with applicable Environment (Protection) Act 1986 under the Hazardous Wastes (Management & Handling) rules 1989.

Environment:

- Does not contain any added lead, mercury or chromium compounds.
- Lead content does not exceed 90 parts per million.

Contact Us

Registered Office : NIPPON PAINT (INDIA) PRIVATE LIMITED

Plot No. K-8(I), Phase-II, SIPCOT Industrial Park, Mambakkam Village, Sriperumbudur, Senguvarchatiram, Kancheepuram - 602 106, Tamil Nadu, India.