



# NIPPON PAINT

## VINILEX

Washable Interior Emulsion

### NIPPON PAINT VINILEX

A specially formulated water based modified acrylic emulsion paint for interior walls. It is durable, washable and provides a superior, smooth finish. It offers good hiding and spreading.

### GREEN ASSURED



## PRODUCT FEATURES



#### Micronized particles

Helps to keep the paint film blister-free, smooth and washable



#### Low VOC

Healthy interiors ensures that home owners can occupy the house immediately after painting



#### Good Washability

Trouble free cleaning of the walls



Where To use: Can be used on interior walls, ceilings and hard & soft boards.



# NIPPON PAINT

# VINILEX

Washable Interior Emulsion

## TECHNICAL DETAILS

|                            |   |  |
|----------------------------|---|--|
| Bases                      | : | White & Bases  |
| Colour Range               | : | Please refer to Nippon Paint shade card and fan decks                      |
| Finish                     | : | Smooth Matt Finish   |
| Dry Time                   | : | To Touch: 30 minutes      To Recoat: 4-6 Hours                             |
| Gloss level                | : | 60° Head: 0 to 5 units   |
| Clean up solvent           | : | Clean, potable water   |
| Stability of diluted paint | : | 24 Hours   |
| Shelf life                 | : | 3 Years from the date of manufacture in original tightly closed containers |
| Dilution                   | : | 50-60% by volume with clean, potable water                                 |

## Coverage:



### VINILEX

12.08 - 13.93 sq.mt./litre/2 coats

(Actual coverage is dependant on the substrate condition)

## HOW TO APPLY

### Surface Preparation:

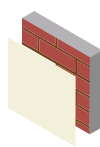


Keep surface clean and dry for a period of at least 3 weeks. Remove dust, dirt, grease and any flaking paint from the surface. and sand to smooth. Ensure there is no fungus or moisture on the walls. Repair surface defects with suitable filler.

### Application:

|                     |   |
|---------------------|---|
| Brush:              | Dilute both 1 <sup>st</sup> and 2 <sup>nd</sup> coats with 50-60% water |
| Roller:             | Dilute both 1 <sup>st</sup> and 2 <sup>nd</sup> coats with 50-60% water |
| Conventional Spray: | Dilute both 1 <sup>st</sup> and 2 <sup>nd</sup> coats with 50-60% water |

### Process:



#### Primer

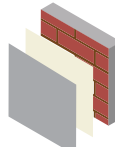
Nippon Paint  
Multi-Purpose  
Wall Sealer/  
Interior Primer



Apply 1 coat



Allow it to dry  
for 6-8 hours

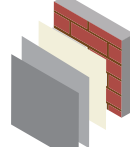


#### Putty

Nippon Paint  
Acrylic Wall Putty

Apply 1-2 coats

Allow it to dry  
for 12-18 hours

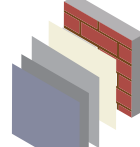


#### Primer

Nippon Paint  
Multi-Purpose  
Wall Sealer/  
Interior Primer

Apply 1 coat

Allow it to dry  
for 6-8 hours



#### Top Coat

Nippon Paint  
Vinilex

Apply 2-3 coats

Allow it to dry  
for 4-6 hours

## SAFETY AND ENVIRONMENT

### During Painting:

Always work in a well ventilated area. Wear appropriate attire, especially gloves and eye protection gear. Avoid contact with skin as it may cause irritation.

### Cleaning:

Clean all equipments with clean water immediately after use.

### Safety Instructions:

In the case of eye contact, rinse immediately with water and seek immediate medical treatment. To remove paint from skin, use soap and water or appropriate cleanser. In the event of spillage, contain and collect spilt paint by using sand or earth.

### Precautions:

Avoid painting when the temperature is below 10 degrees Celsius. Painting is not recommended if the moisture content and alkalinity of the walls is high. Moisture content of the walls should be below 16% (measured by Protimeter) and alkalinity of the wall should be below pH-9. Relative humidity should be below 85%. Painting on a newly plastered wall is recommended after 12 weeks of curing.

### Storage:

Store paint in a cool, dry and well ventilated place away from heat sources, flammables or direct sunlight. Keep container tightly closed in a secure, upright position. Do not store near food, drink or animal feed. Keep out of reach of children. Do not dispose of unwanted paint into drains, water sources or open sewers. To dispose safely, pour unwanted paint onto old newspapers and let dry before placing in a proper waste receptacle.

### Disposal Information:

Disposal of any paint waste & containers in accordance with applicable Environment (Protection) Act 1986 under the Hazardous Wastes (Management & Handling) rules 1989.

### Environment:

Does not contain any added lead, mercury or chromium compounds.

**Lead content does not exceed 90 parts per million.**

Note: For dark shades and horizontal surfaces 1 or 2 additional coats may be required for better performance of paint film.

