



NIPPON PAINT

**MOMENTO
DZINE**
SPECIAL EFFECT PAINT

NIPPON PAINT MOMENTO DZINE

Nippon Paint Momento Dzine is Premium Water base Special effect Paint that creates a variety of special effects on interior walls. It is based on Pure acrylic Emulsion.

GREEN ASSURED



PRODUCT FEATURES



Extended Open Time

Good Impression of design,
no patchiness in the design



Excellent washability

Trouble free cleaning of the walls



Stain Resistance

Stain free clean walls resulting
in a healthy environment



Fungal Resistance

Gives a luxurious look and blemish
free finish to the walls



Where To use: Can be used on interior walls, ceilings and hard & soft boards.



NIPPON PAINT

MOMENTO DZINE

SPECIAL EFFECT PAINT

TECHNICAL DETAILS

Bases	: MD1 Base
Colour Range	: Please refer to Nippon Paint shade card and fan decks
Finish	: Smooth Finish
Dry Time	: To Touch: 3-4 Hours
Gloss level	: soft Sheen
Clean up solvent	: Clean, potable water
Stability of diluted paint	: Use within 24 Hours
Shelf life	: 3 Years from the date of manufacture in original tightly closed containers .
Dilution	: 5% by Volume with clean, potable water.

Coverage:



MOMENTO DZINE

Dzine - 11.10 sq.mt. to 13 sq.mt./litre/2 coats

(Actual coverage is dependant on the substrate condition, surface porosity, method of application)

HOW TO APPLY

Surface Preparation:



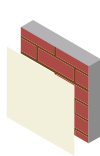
Keep surface clean & dry. Remove dust, dirt, grease and any flaking paint from the surface and sand to smooth. Ensure there is no fungus or moisture on the wall.

Application:

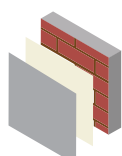
Brush : Dilute top coat with 5% by volume with clean, potable water.

Roller : Dilute top coat with 5% by volume with clean, potable water.

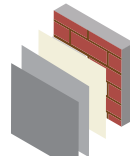
Process:



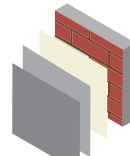
Primer
Nippon Paint
Multi-Purpose
Wall Sealer/
Interior Primer



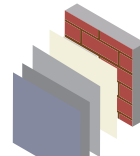
Putty
Nippon Paint
Acrylic Wall Putty



Primer
Nippon Paint
Multi-Purpose
Wall Sealer/
Interior Primer



Base coat
Nippon Paint
Satin Glo+



Top Coat
Nippon Paint
Momento Dzine



Apply 1 coats



Allow it to dry
for 6-8 hours

Apply 1-2 coats

Allow it to dry
for 12-18 hours

Apply 1 coats

Allow it to dry
for 6-8 hours

Apply 2-3 coats

Allow it to dry
for 4-6 hours

Apply 2-3 coats

Apply 1 coat of
Momento Dzine
with
recommended
Special Effect
tools

SAFETY AND ENVIRONMENT

During Painting:

Always work in a well ventilated area. Wear appropriate attire, especially gloves and eye protection gear. Avoid contact with skin as it may cause irritation.

Cleaning:

Clean all equipments with clean water immediately after use.

Safety Instructions:

In the case of eye contact, rinse immediately with water and seek immediate medical treatment. To remove paint from skin, use soap and water or appropriate cleanser. In the event of spillage, contain and collect spilt paint by using sand or earth.

Precautions:

Avoid painting when the temperature is below 10 degrees Celsius. Painting is not recommended if the moisture content and alkalinity of the walls is high. Moisture content of the walls should be below 16% (measured by Protimeter) and alkalinity of the wall should be below pH-9. Relative humidity should be below 85%. Painting on a newly plastered wall is recommended after 12 weeks of curing.

Storage:

Store paint in a cool, dry and well ventilated place away from heat sources, flammables or direct sunlight. Keep container tightly closed in a secure, upright position. Do not store near food, drink or animal feed. Keep out of reach of children. Do not dispose of unwanted paint into drains, water sources or open sewers. To dispose safely, pour unwanted paint onto old newspapers and let dry before placing in a proper waste receptacle.

Disposal Information:

Disposal of any paint waste & containers in accordance with applicable Environment (Protection) Act 1986 under the Hazardous Wastes (Management & Handling) rules 1989.

Environment:

Does not contain any added lead, mercury or chromium compounds.

Lead content does not exceed 90 parts per million.

One square metre equals 10.764 square feet.' So to convert from sq.mt to sq.ft multiply the area value by 10.764

