



NIPPON PAINT

KIDZ

ALL-IN-ONE PAINT

NIPPON PAINT KIDZ

All-in-one paint is specially formulated for children. It has three unique features and technologies - clean air due to active carbon technology, safe to touch due to silver ion technology and superior washability due to anti-stain technology.

GREEN ASSURED

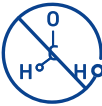


PRODUCT FEATURES



High Sheen Finish

Gives rich luxurious look and feel to walls



Anti-formaldehyde

Results in clean fresh air



Anti-bacterial

Keeps the walls hygienic. It reduces the chance of picking up allergies and keeps residents healthy



Low VOC

Healty interiors ensure that home owners can occupy the house immediately after painting



Excellent Washability

Trouble free cleaning of the walls



Anti-Stain Technology

Stain-free clean walls resulting in a healthy environment



Stain-free Clean Walls Resulting in a Healthy Environment

Keeps the walls hygienic. It reduces the chance of picking up allergies and keeps residents healthy



Where To use: Can be used on interior walls, ceilings and hard & soft boards.



NIPPON PAINT

KIDZ

ALL-IN-ONE PAINT

TECHNICAL DETAILS

Bases	:	White & Bases
Colour Range	:	Please refer to Nippon Paint shade card and fan decks
Finish	:	High Sheen
Dry Time	:	To Touch: 30 minutes To Recoat: 4-6 Hours
Gloss level	:	60° Head: 30 - 40 units
Clean up solvent	:	Clean, potable water
Stability of diluted paint	:	24 Hours
Shelf life	:	3 Years from the date of manufacture in original tightly closed containers
Dilution	:	20 - 30% by volume with clean potable water. Stir well before use. Upto 20% by volume with clean potable water for dark shades

Coverage:



KIDZ

9.29 sq.mt .to 11.14 sq.mt.

(Actual coverage is dependant on the substrate condition, surface porosity, method of application).

HOW TO APPLY

Surface Preparation:

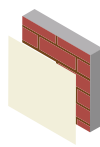


Keep surface clean & dry. Remove dust, dirt, grease and any flaking paint from the surface and sand to smooth. Ensure there is no fungus or moisture on the walls.

Application:

Brush:	Dilute both 1 st and 2 nd coats with 20-30% water
Roller:	Dilute both 1 st and 2 nd coats with 20-30% water
Conventional Spray:	Dilute both 1 st and 2 nd coats with 20-30% water

Process:



Primer

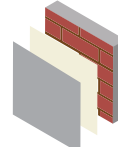
Nippon Paint
Dr. Bond
Efflorescence
Resistant sealer



Apply Coat With
50% Dilution Water



Allow it to dry
for 4-6 hours

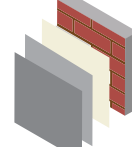


Putty

Nippon Paint
Acrylic Wall Putty

Apply 1-2 coats

Allow it to dry
for 12-18 hours

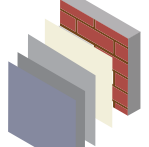


Primer

Nippon Paint
Dr. Bond
Efflorescence
Resistant sealer

Apply Coat With
50% Dilution Water

Allow it to dry
for 4-6 hours



Top Coat

Nippon Paint
KIDZ
All in One Paint

Apply 2 -3 coats

Allow it to dry
for 4-6 hours

SAFETY AND ENVIRONMENT

During Painting:

Always work in a well ventilated area. Wear appropriate attire, especially gloves and eye protection gear. Avoid contact with skin as it may cause irritation.

Cleaning:

Clean all equipments with clean water immediately after use.

Safety Instructions:

In the case of eye contact, rinse immediately with water and seek immediate medical treatment. To remove paint from skin, use soap and water or appropriate cleanser. In the event of spillage, contain and collect spilt paint by using sand or earth.

Precautions:

Avoid painting when the temperature is below 10 degrees Celsius. Painting is not recommended if the moisture content and alkalinity of the walls is high. Moisture content of the walls should be below 16% (measured by Protimeter) and alkalinity of the wall should be below pH-9. Relative humidity should be below 85%. Painting on a newly plastered wall is recommended after 12 weeks of curing.

Post Application Instruction: For removing stains, use Soft Cotton cloth or Sponge with mild soap solution and wipe clean. Please allow atleast 1 week of drying time to freshly painted wall for it to be ready for stain removal/cleaning. Stains are best removed when fresh or within 24 hours. One square metre equals 10.764 square feet. So to convert from sq.mt to sq.ft multiply the area value by 10.764

Storage:

Store paint in a cool, dry and well ventilated place away from heat sources, flammables or direct sunlight. Keep container tightly closed in a secure, upright position. Do not store near food, drink or animal feed. Keep out of reach of children. Do not dispose of unwanted paint into drains, water sources or open sewers. To dispose safely, pour unwanted paint onto old newspapers and let dry before placing in a proper waste receptacle.

Disposal Information:

Disposal of any paint waste & containers in accordance with applicable Environment (Protection) Act 1986 under the Hazardous Wastes (Management & Handling) rules 1989.

Environment:

Does not contain any added lead, mercury or chromium compounds.

Lead content does not exceed 90 parts per million.

