



NIPPON PAINT

DURAFRESH SOLO

SELF PRIMING TECHNOLOGY

Nippon Durafresh Solo - Flexi Clean is a specially formulated, high-performance, exterior emulsion paint having systematic UV crosslinking mechanism exhibiting excellent balance of flexibility and dirt pick-up resistance. It exhibits Heat Ban Technology which reduces surface temperature by up to 7°C. It imparts a rich sheen finish and has anti-algal resistance to keep your walls fresh for a longer time.

GREEN ASSURED



PRODUCT FEATURES



Dirt Pick-up Resistant

The exteriors look new and beautiful for years.



Heat Ban Technology

This makes the interior cooler, thus helping to save energy used for air conditioning.



Low VOC

Environment-friendly and healthy paint



7 Year Protection

*7 years Performance Warranty for Film Integrity, Flaking, Peeling & Colour Retention.



Self Priming



Where To use: Can be used on Exterior Masonry Surfaces.

*7 years Performance Warranty for Film Integrity, Flaking, Peeling & Colour Retention. *5 years Anti Algal warranty. Please refer Warranty Card for further details.

*T&C apply



NIPPON PAINT

DURAFRESH SOLO

SELF PRIMING TECHNOLOGY

TECHNICAL DETAILS

Bases	:	White & Bases
Colour Range	:	Please refer to Nippon Paint shade card and fan decks
Finish	:	Sheen finish
Dry Time	:	To Touch: 30 minutes To Recoat: 4-6 hours
Gloss level	:	60° head: 5 -15
Clean up solvent	:	Clean, potable water
Stability of diluted paint	:	24 Hours
Shelf life	:	3 Years from the date of manufacture in original tightly closed containers
Dilution System A	:	Up to 50% by volume with clean, potable water
Dilution System B	:	Self Priming 1 st Coat: 50 % by volume with clean, potable water; 2 nd Coat: up to 10% by volume with clean, potable water

Coverage:



DURAFRESH SOLO

Coverage System A: 10.22-12.08 sq.mt./litre/coat & 5.11-6.04 sq.mt./litre/2 coats

Coverage System B: 9.29-11.15 sq.mt./litre/coat & 4.65-5.57 sq.mt./litre/2 coats

(Actual coverage is dependent on the substrate condition, surface porosity, method of application)

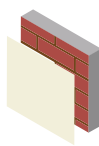
HOW TO APPLY

Surface Preparation:

For Repainting: Clean the surface till it is free from dust, grease and flaking paint. Any unstable paint to be removed, using high-pressure wash or scraper, whichever is appropriate. Algae and fungus on the wall to be removed, by using high-pressure wash or coir brush and shall be treated with Walltron Kleanwall Fungicidal solution.

New plaster/Fresh Concrete: Ensure surface is completely cured and dry. Application of cement paint/lime/Cement putty as undercoat is not recommended. Fill the cracks up to 3mm if any with Walltron N-seal cracksealer powder.

System A:



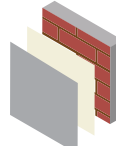
Primer
Nippon Paint Multi-Purpose Wall Sealer /Exterior Primer



Apply 1 coat
50% dilution water



Allow it to dry
for 4-6 hours

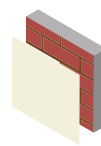


Top Coat
Nippon Paint Durafresh Solo

Apply 2-3 coats
50% dilution water

Allow it to dry
for 4-6 hours

System B:



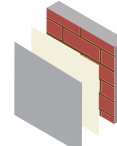
Self Priming Coat
Nippon Paint Durafresh Solo



Apply 1 coat
50% dilution water



Allow it to dry
for 4-6 hours



Top Coat
Nippon Paint Durafresh Solo

Apply 1 coat
10% dilution water

Allow it to dry
for 4-6 hours

Application:

Durafresh Solo can be applied using Brush, Roller or Conventional Spray.

For surface exhibiting efflorescence and chalking use Nippon Paint Dr. Bond Efflorescence Resistant Sealer

SAFETY AND ENVIRONMENT

During Painting:

Always work in a well ventilated area. Wear appropriate attire, especially gloves and eye protection gear. Avoid contact with skin as it may cause irritation.

Cleaning:

Clean all equipments with clean water immediately after use.

Safety Instructions:

In the case of eye contact, rinse immediately with water and seek immediate medical treatment. To remove paint from skin, use soap and water or appropriate cleanser. In the event of spillage, contain and collect spilt paint by using sand or earth.

Precautions:

Avoid painting when the temperature is below 10°C. Painting is not recommended if the moisture content and alkalinity of the walls is high. Moisture content of the walls should be below 16% (measured by Protimeter) and alkalinity of the wall should be below pH-9. Relative humidity should be below 85%. Painting on a newly plastered wall is recommended after 12 weeks of curing.

Post Application Instruction: To enhance performance of the paint film, clean the exterior surfaces, algae or fungus if any with clean water in an interval of 6 months.

Note: For dark shades and Horizontal surface, one or two additional coats are recommended for better performance of paint film.

Primed surface should be immediately painted with top coats. Durafresh Solo should not be applied on surfaces / substrates that are subjected to continuous seepage or dampness.

Storage:

Store paint in a cool, dry and well ventilated place away from heat sources, flammables or direct sunlight. Keep container tightly closed in a secure, upright position. Do not store near food, drink or animal feed. Keep out of reach of children. Do not dispose of unwanted paint into drains, water sources or open sewers. To dispose safely, pour unwanted paint onto old newspapers and let dry before placing in a proper waste receptacle.

Disposal Information:

Disposal of any paint waste & containers in accordance with applicable Environment (Protection) Act 1986 under the Hazardous Wastes (Management & Handling) rules 1989.

Environment:

Does not contain any added lead, mercury or chromium Compounds.

Lead content does not exceed 90 parts per million.

