



# NIPPON PAINT

## BREEZE ULTRA

INTERIOR EMULSION

### NIPPON PAINT BREEZE ULTRA

Nippon Paint Breeze Ultra is an Economy Interior Emulsion with improved Fungal Resistance and provide Smooth & Matt Finish.

### GREEN ASSURED



## PRODUCT FEATURES



#### Smooth Finish

Gives a rich smooth finish further enhancing the hiding quality



#### Low VOC

Healthy interiors ensures that home owners can occupy the house immediately after painting



#### Excellent Hiding

Gives a luxurious look and blemish free finish to the walls



**3 years**  
**Performance**  
**warranty\***



Where To use: Can be used on interior walls, ceilings and hard & soft boards.



# NIPPON PAINT

## BREEZE ULTRA

INTERIOR EMULSION

## TECHNICAL DETAILS

Bases	:	White & Bases
Colour Range	:	Please refer to Nippon Paint shade card and fan decks
Finish	:	Smooth Matt finish
Dry Time	:	To Touch: 30 minutes      To Recoat: 4-6 Hours
Gloss level	:	60° Head: 0 to 5 units
Clean up solvent	:	Clean, potable water
Stability of diluted paint	:	24 Hours
Shelf life	:	3 Years from the date of manufacture in original tightly closed containers .
Dilution	:	50 to 75% by volume with clean, potable water. For dark Shades 30% by volume with clean, potable water is recommended. Stir & Strain well before use.

## Coverage:



### BREEZE ULTRA

11.10 sq.mt. to 13 sq.mt.

(Actual coverage is dependant on the substrate condition, surface porosity, method of application)

## HOW TO APPLY

### Surface Preparation:

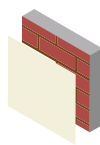


Keep surface clean & dry. Remove dust, dirt, grease and any flaking paint from the surface and sand to smooth. Ensure there is no fungus or moisture on the wall.

### Application:

Brush:	Dilute both 1 <sup>st</sup> and 2 <sup>nd</sup> coats with 50- 75% water
Roller:	Dilute both 1 <sup>st</sup> and 2 <sup>nd</sup> coats with 50- 75% water
Conventional Spray:	Dilute both 1 <sup>st</sup> and 2 <sup>nd</sup> coats with 50- 75% water

### Process:



#### Primer

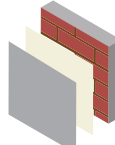
Nippon Paint  
Multi-Purpose  
Wall Sealer/  
Interior Primer/  
Latex Interior Primer



Apply 1 coats



Allow it to dry  
for 6-8 hours

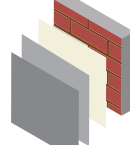


#### Putty

Nippon Paint  
Acrylic Wall Putty

Apply 1-2 coats

Allow it to dry  
for 12-18 hours

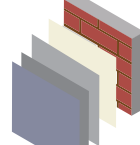


#### Primer

Nippon Paint  
Multi-Purpose  
Wall Sealer/  
Interior Primer/  
Latex Interior Primer

Apply 1 coats

Allow it to dry  
for 6-8 hours



#### Top Coat

Nippon Paint  
Breeze Ultra  
Interior  
Emulsion

Apply 2-3 coats

Allow it to dry  
for 4-6 hours

## SAFETY AND ENVIRONMENT

### During Painting:

Always work in a well ventilated area. Wear appropriate attire, especially gloves and eye protection gear. Avoid contact with skin as it may cause irritation.

### Cleaning:

Clean all equipments with clean water immediately after use.

### Safety Instructions:

In the case of eye contact, rinse immediately with water and seek immediate medical treatment. To remove paint from skin, use soap and water or appropriate cleanser. In the event of spillage, contain and collect spilt paint by using sand or earth.

### Precautions:

Avoid painting when the temperature is below 10 degrees Celsius. Painting is not recommended if the moisture content and alkalinity of the walls is high. Moisture content of the walls should be below 16% (measured by Protimeter) and alkalinity of the wall should be below pH-9. Relative humidity should be below 85%. Painting on a newly plastered wall is recommended after 12 weeks of curing.

### Storage:

Store paint in a cool, dry and well ventilated place away from heat sources, flammables or direct sunlight. Keep container tightly closed in a secure, upright position. Do not store near food, drink or animal feed. Keep out of reach of children. Do not dispose of unwanted paint into drains, water sources or open sewers. To dispose safely, pour unwanted paint onto old newspapers and let dry before placing in a proper waste receptacle.

### Disposal Information:

Disposal of any paint waste & containers in accordance with applicable Environment (Protection) Act 1986 under the Hazardous Wastes (Management & Handling) rules 1989.

### Environment:

Does not contain any added lead, mercury or chromium compounds.

**Lead content does not exceed 90 parts per million.**

Note: For dark shades and horizontal surfaces 1 or 2 additional coats may be required for better performance of paint film.  
One square metre equals 10.764 square feet. So to convert from sq.mt to sq.ft multiply the area value by 10.764

