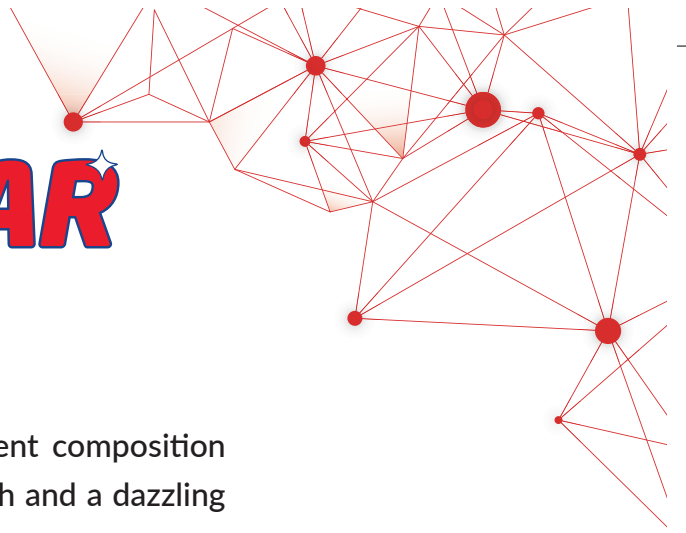




**NIPPON
PAINT**

BREEZE STAR



NIPPON PAINT BREEZE STAR

Nippon Paint Breeze Star Emulsion contains superior pigment composition along with rich polymer which provide a superior sheen finish and a dazzling look to your wall, at an economical price

GREEN ASSURED

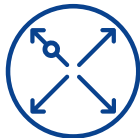


PRODUCT FEATURES



Sheen Finish

Gives a rich, luxurious look and feel to walls



Good Coverage

Cost of painting is low



Low VOC

Healthy interiors — ensures that home owners can occupy the house immediately after painting



3 Year Protection*



Where To use: Can be used on interior walls, ceilings and hard & soft boards.

*T&C apply



**NIPPON
PAINT**

BREEZE STAR

TECHNICAL DETAILS

Bases	:	White Base, Base 3 & Yellow Base
Colour Range	:	Please refer to Nippon Paint shade card and fandec
Finish	:	Sheen Finish
Dry Time	:	To Touch: 30 minutes To Recoat: 4-6 hours
Gloss Level	:	60° Head: 12 to 18 units
Clean Up Solvent	:	Clean, potable water
Stability of Diluted Paint	:	24 hours
Shelf Life	:	3 years from the date of manufacture in original tightly closed containers
Dilution	:	40-50% by volume with clean, potable water. Stir well before use. 20-30% by volume with potable water for dark shades

Coverage:



BREEZE STAR

21.37 - 23.22 sq.mt./litre/coat &
12.08 - 13.01 sq.mt./litre/2 coats

(Actual coverage is dependant on the substrate condition, surface porosity, method of application)

HOW TO APPLY

Surface Preparation:

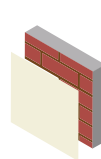


Keep surface clean & dry. Remove dust, dirt, grease and any flaking paint from the surface and sand to smooth. Ensure there is no fungus or moisture on the wall.

Application:

Brush:	Dilute both 1 st and 2 nd coats with 40-50% water
Roller:	Dilute both 1 st and 2 nd coats with 40-50% water
Conventional Spray:	Dilute both 1 st and 2 nd coats with 40-50% water

Process:



Primer

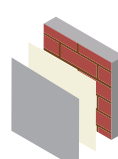
Nippon Paint
Multipurpose
Wall Sealer/
Interior Primer/
Latex Interior Primer



Apply 1 coat



Allow it to dry
for 6-8 hours

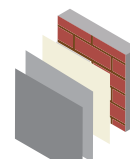


Putty

Nippon Paint
Acrylic Wall Putty

Apply 1-2 coats

Allow it to dry
for 12-18 hours

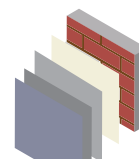


Primer

Nippon Paint
Multipurpose
Wall Sealer/
Interior Primer/
Latex Interior Primer

Apply 1 coat

Allow it to dry
for 6-8 hours



Top Coat

Nippon Paint
Breeze Star

Apply 2-3 coats

Allow it to dry
for 4-6 hours

SAFETY AND ENVIRONMENT

During Painting:

Always work in a well ventilated area. Wear appropriate attire, especially gloves and eye protection gear. Avoid contact with skin as it may cause irritation.

Cleaning:

Clean all equipment with clean water immediately after use.

Safety Instructions:

In the case of eye contact, rinse immediately with water and seek immediate medical treatment. To remove paint from skin, use soap and water or appropriate cleanser. In the event of spillage, contain and collect spilt paint by using sand or earth.

Precautions:

Avoid painting when the temperature is below 10°C. Painting is not recommended if the moisture content and alkalinity of the walls is high. Moisture content of the walls should be below 16% (measured by Protimeter) and alkalinity of the wall should be below pH-9. Relative humidity should be below 85%. Painting on a newly plastered wall is recommended after 12 weeks of curing.

Note: For dark shades and horizontal surfaces, 1 or 2 additional coats may be required for better performance of paint film.

Storage:

Store paint in a cool, dry and well ventilated place away from heat sources, flammables or direct sunlight. Keep container tightly closed in a secure, upright position. Do not store near food, drink or animal feed. Keep out of reach of children. Do not dispose of unwanted paint into drains, water sources or open sewers. To dispose safely, pour unwanted paint onto old newspapers and let it dry before placing in a proper waste receptacle.

Disposal Information:

Disposal of any paint waste & containers in accordance with applicable Environment (Protection) Act 1986 under the Hazardous Wastes (Management & Handling) rules 1989.

Environment:

Does not contain any added lead, mercury or chromium compounds.

Lead content does not exceed 90 parts per million.

