



# NIPPON PAINT

## ATOM FIBRA

FIBRE REINFORCED INTERIOR AND EXTERIOR EMULSION

Nippon Paint Atom Fibra 2-in-1 Multi-Purpose Emulsion paint specially designed for both Interior & Exterior walls. It is reinforced with microfibres which gives enhanced mechanical strength to the paint film.

### GREEN ASSURED



### PRODUCT FEATURES



#Crack Bridging



#Anti-Carbonation



Excellent Coverage



Low VOC



Easy Washability



2-in-1 Emulsion



Where To use: Can be used for both Interior and Exterior surfaces.



\*T&C apply. Refer to the warranty terms and conditions.



NIPPON  
PAINT

ATOM  
FIBRA  
FIBRE REINFORCED INTERIOR AND EXTERIOR EMULSION

## TECHNICAL DETAILS

Bases	:	White Base, Base 3, Base 2, Base 1, Yellow Base, Yellow Oxide and Red Oxide.
Colour Range	:	Please refer to Nippon Paint shade card and fan decks
Finish	:	Matt
Dry Time	:	To Touch: 30 minutes                      To Recoat: 4-6 Hours
Gloss level	:	60° Head: less than 5
Clean up solvent	:	Clean, potable water
Stability of diluted paint	:	24 Hours
Shelf life	:	3 Years from the date of manufacture in original tightly closed containers
Dilution	:	50% by volume with clean, potable waterfor both Interior as well as exterior Application. Stir well before use. 20-30% by volume with potable water for dark shades

## Coverage:



### ATOM FIBRA 2-IN-1

Coverage:  
Interior: 16.72-19.51 sq.mt./litre/coat & 9.29-10.22 sq.mt./litre/2 coats  
Exterior: 9.29-10.22 sq.mt./litre/coat & 5.11-5.57 sq.mt./litre/2 coats

(Actual coverage is dependant on the substrate condition, Film Thickness, surface porosity, method of application)

## HOW TO APPLY

### Surface Preparation:

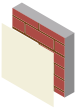
Interior Surface: Keep surface clean and dry. Remove dust, dirt, grease and loose flaking paint from the surface and rub with sandpaper to smooth. Ensure there is no fungus or moisture on the walls.

Exterior Surface: For Repainting: Clean ther surface till it is free from dust, grease and flaking paint from surface. Any unstable paint to be removed, using high pressure wash or scraper whichever is appropriate. Algae and Fungus on the wall to be removed, by using high pressure wash or coir brush and shall be treated with Walltron Kleanwall fungicidal solution.

New plaster/Fresh Concrete: Ensure surface is completely cured and dry. Application of cement paint/lime/cement putty as undercoat is not recommended. Fill the cracks upto 3mm if any with Walltron N-Seal crack fill powder.

### Process:

#### Recommended painting system: Interior surface



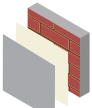
**Primer**  
Nippon Paint  
Multi-Purpose Wall  
Sealer/Interior Primer



Apply 1 coats



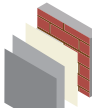
Allow it to dry  
for 6-8 hours



**Putty**  
Nippon Paint  
Acrylic Wall Putty

Apply 1-2 coats

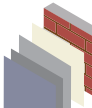
Allow it to dry  
for 12-18 hours



**Primer**  
Nippon Paint  
Multi-Purpose Wall  
Sealer/Interior Primer

Apply 1 coats

Allow it to dry  
for 6-8 hours

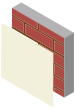


**Top Coat**  
Nippon Paint Atom Fibra  
Multi-purpose Emulsion

Apply 2-3 coats

Allow it to dry  
for 4-6 hours

#### Exterior surface (for repainting)



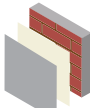
**Primer**  
Nippon Paint  
Multi-Purpose Wall  
Sealer/Exterior Primer



Apply 1 coats



Allow it to dry  
for 6-8 hours

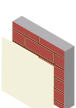


**Top Coat**  
Nippon Paint Atom Fibra  
Multi-purpose Emulsion

Apply 1-2 coats

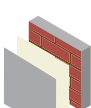
Allow it to dry  
for 4-6 hours

#### Recommended painting system: Exterior surface (For anti-carbonation properties)



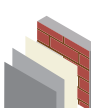
**Base Coat**  
Nippon Paint  
Hydrosshield Dampproof

Apply a coat with 30%  
dilution using potable water  
by volume with forced  
coverage of 75-80 sq ft/Litre



**Base Coat**  
Nippon Paint  
Hydrosshield Dampproof

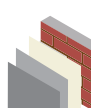
Apply a coat without  
dilution with forced  
coverage of 75-80 sq ft/Litre



**Top Coat**  
Nippon Paint Atom Fibra  
Multi-purpose Emulsion

Apply 2-3 coats  
Allow it to dry  
for 4-6 hours

#### Exterior surface (for new plaster)



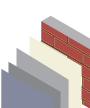
**Primer**  
Nippon Paint  
Dr.Bond Efflorescence  
Resistance Sealer



Apply 1 coats



Allow it to dry  
for 6-8 hours



**Top Coat**  
Nippon Paint Atom Fibra  
Multi-purpose Emulsion

Apply 2-3 coats

Allow it to dry  
for 4-6 hours

It comes with Fibre Reinforcement which provides Crack Bridging ability upto 0.5 mm.

### Application:

Brush: Dilute both 1<sup>st</sup> and 2<sup>nd</sup> coats with 50% water

Roller: Dilute both 1<sup>st</sup> and 2<sup>nd</sup> coats with 50% water

Conventional Spray: Dilute both 1<sup>st</sup> and 2<sup>nd</sup> coats with 40% water

## SAFETY AND ENVIRONMENT

#### During Painting:

Always work in a well ventilated area. Wear appropriate attire, especially gloves and eye protection gear. Avoid contact with skin as it may cause irritation.

#### Cleaning:

Clean all equipments with clean water immediately after use.

#### Safety Instructions:

In the case of eye contact, rinse immediately with water and seek immediate medical treatment. To remove paint from skin, use soap and water or appropriate cleanser. In the event of spillage, contain and collect spilt paint by using sand or earth.

#### Precautions:

Avoid painting when the temperature is below 10 degrees Celsius. Painting is not recommended if the moisture content and alkalinity of the walls is high. Moisture content of the walls should be below 16% (measured by Protimeter) and alkalinity of the wall should be below pH-9. Relative humidity should be below 85%. Painting on a newly plastered wall is recommended after 6 weeks of curing.

Note: For dark shades and horizontal surfaces 1 or 2 additional coats may be required for better performance of paint film. Primed surface should be immediately painted with topcoats One square metre equals 10.764 square feet.' So to convert from sq.mt to sq.ft multiply the area value by 10.764

#### Storage:

Store paint in a cool, dry and well ventilated place away from heat sources, flammables or direct sunlight. Keep container tightly closed in a secure, upright position. Do not store near food, drink or animal feed. Keep out of reach of children. Do not dispose of unwanted paint into drains, water sources or open sewers. To dispose safely, pour unwanted paint onto old newspapers and let dry before placing in a proper waste receptacle.

#### Disposal Information:

Disposal of any paint waste & containers in accordance with applicable Environment (Protection) Act 1986 under the Hazardous Wastes (Management & Handling) rules 1989.

#### Environment:

Does not contain any added lead, mercury or chromium compounds.  
**Lead content does not exceed 90 parts per million.**

