



**NIPPON  
PAINT**

**SATIN GLO  
PRIME**

LUXURY INTERIOR EMULSION

## NIPPON PAINT SATIN GLO PRIME

A Luxury Interior Emulsion is based on pure acrylic emulsion formulated to impart high sheen to decorate interior walls. It possesses excellent washability and stain-resistance to keep the walls beautiful for long. It contains low VOC ensuring safe and healthy interiors. Its anti-bacterial property provides proven protection against bacteria and also contains low VOC ensuring safe and healthy interiors.

## GREEN ASSURED



## PRODUCT FEATURES



### High Sheen Finish

Gives rich luxurious look and feel to walls



### Stain-resistant

Stain-free clean walls resulting in a healthy environment



### Anti-bacterial

Keeps the walls hygienic. It reduces the chance of picking up allergies and keeps residents healthy



### Low VOC

Healthy interiors ensure that home owners can occupy the house immediately after painting





# NIPPON PAINT

## SATIN GLO PRIME

LUXURY INTERIOR EMULSION

## TECHNICAL DETAILS

Bases	:	White & Bases
Colour Range	:	Please refer to Nippon Paint shade card and fan decks
Finish	:	High Sheen
Dry Time	:	To Touch: 30 minutes      To Recoat: 4-6 Hours
Gloss level	:	60° Head: 45- 55 units
Clean up solvent	:	Clean, potable water
Stability of diluted paint	:	24 Hours
Shelf life	:	3 Years from the date of manufacture in original tightly closed containers
Dilution	:	Upto 40% by volume with clean potable water. Stir well before use. Upto 20% by volume with clean potable water for dark shades

## Coverage:



### SATIN GLO PRIME

22.30 - 24.15 sq.mt./litre/coat &  
10.22 - 12.08 sq.mt./litre/2 coats

(Actual coverage is dependant on the substrate condition, surface porosity, method of application)

## HOW TO APPLY

### Surface Preparation:

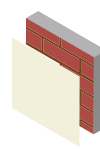


Keep surface clean & dry. Remove dust, dirt, grease and any flaking paint from the surface and sand to smooth. Ensure there is no fungus or moisture on the wall.

### Application:

Brush:	Dilute both 1 <sup>st</sup> and 2 <sup>nd</sup> coats with 40% water
Roller:	Dilute both 1 <sup>st</sup> and 2 <sup>nd</sup> coats with 40% water
Conventional Spray:	Dilute both 1 <sup>st</sup> and 2 <sup>nd</sup> coats with 40% water

### Process:



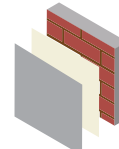
**Primer**  
Nippon Paint  
Multi-Purpose  
Wall Sealer/  
Interior Primer



Apply 1 coat



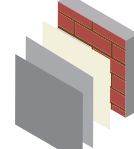
Allow it to dry  
for 6-8 hours



**Putty**  
Nippon Paint  
Acrylic Wall Putty

Apply 1-2 coats

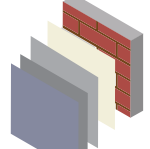
Allow it to dry  
for 12-18 hours



**Primer**  
Nippon Paint  
Multi-Purpose  
Wall Sealer/  
Interior Primer

Apply 1 coat

Allow it to dry  
for 6-8 hours



**Top Coat**  
Nippon Paint  
Satin Glo Prime

Apply 2-3 coats

Allow it to dry  
for 4-6 hours

## SAFETY AND ENVIRONMENT

### During Painting:

Always work in a well ventilated area. Wear appropriate attire, especially gloves and eye protection gear. Avoid contact with skin as it may cause irritation.

### Cleaning:

Clean all equipments with clean water immediately after use.

### Safety Instructions:

In the case of eye contact, rinse immediately with water and seek immediate medical treatment. To remove paint from skin, use soap and water or appropriate cleanser. In the event of spillage, contain and collect spilt paint by using sand or earth.

### Precautions:

Avoid painting when the temperature is below 10 degrees Celsius. Painting is not recommended if the moisture content and alkalinity of the walls is high. Moisture content of the walls should be below 16% (measured by Protimeter) and alkalinity of the wall should be below pH-9. Relative humidity should be below 85%. Painting on a newly plastered wall is recommended after 12 weeks of curing.

### Storage:

Store paint in a cool, dry and well ventilated place away from heat sources, flammables or direct sunlight. Keep container tightly closed in a secure, upright position. Do not store near food, drink or animal feed. Keep out of reach of children. Do not dispose of unwanted paint into drains, water sources or open sewers. To dispose safely, pour unwanted paint onto old newspapers and let dry before placing in a proper waste receptacle.

### Disposal Information:

Disposal of any paint waste & containers in accordance with applicable Environment (Protection) Act 1986 under the Hazardous Wastes (Management & Handling) rules 1989.

### Environment:

Does not contain any added lead, mercury or chromium compounds.

**Lead content does not exceed 90 parts per million.**

**Post Application Instruction:** For removing stains, use Soft Cotton cloth or Sponge with mild soap solution and wipe clean.

Please allow atleast 1 week of drying time to freshly painted wall for it to be ready for stain removal/cleaning. Stains are best removed when fresh or within 24 hours.

